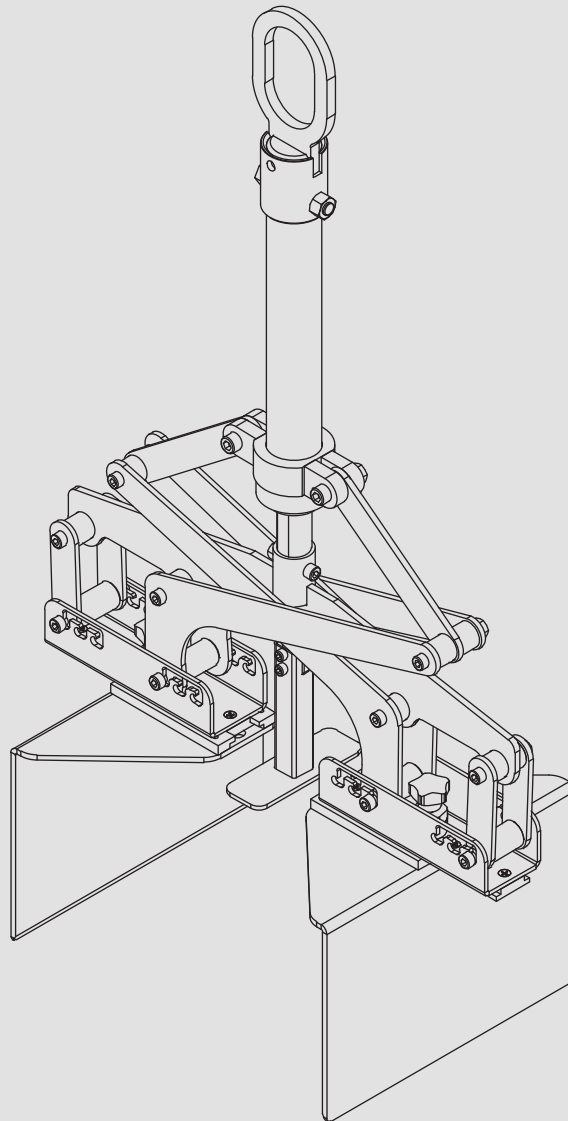


BOX LIFTING CLAMP

CBL-680



CREATED BY

AARDWOLF INDUSTRIES
Marketing Department

Published on:
April 2025

Contact us:  info@aardwolf.com.au
 www.aardwolf.com.au



INDEX

Page

01 OVERVIEW

Introduction	04
Technical data	05

02 SAFETY INSTRUCTIONS

08

03 USER INSTRUCTIONS

09

04 MAINTENANCE

10

05 WARRANTY

11

Dear Customer,

Thank you for choosing the **Aardwolf Box Lifting Clamp**.

This manual provides essential information on **Aardwolf Box Lifting Clamp CBL-680**.

Please read this manual thoroughly before using the equipment and keep it accessible for future reference.

If you have any questions, require spare parts, or need to report any issues, please contact the Aardwolf distributor at your location, provide the product code and serial number, and send them to **info@aardwolf.com.au** for assistance.

We hope this advanced tool meets your needs and exceeds your expectations.

Best regards,

Aardwolf Industries

 info@aardwolf.com.au

 www.aardwolf.com.au

01 OVERVIEW



INTRODUCTION

The Aardwolf Box Lifter CBL-680 is an efficient solution for lifting and handling carton boxes and various box-shaped materials in industrial settings such as warehouses, manufacturing facilities, and shipping operations.

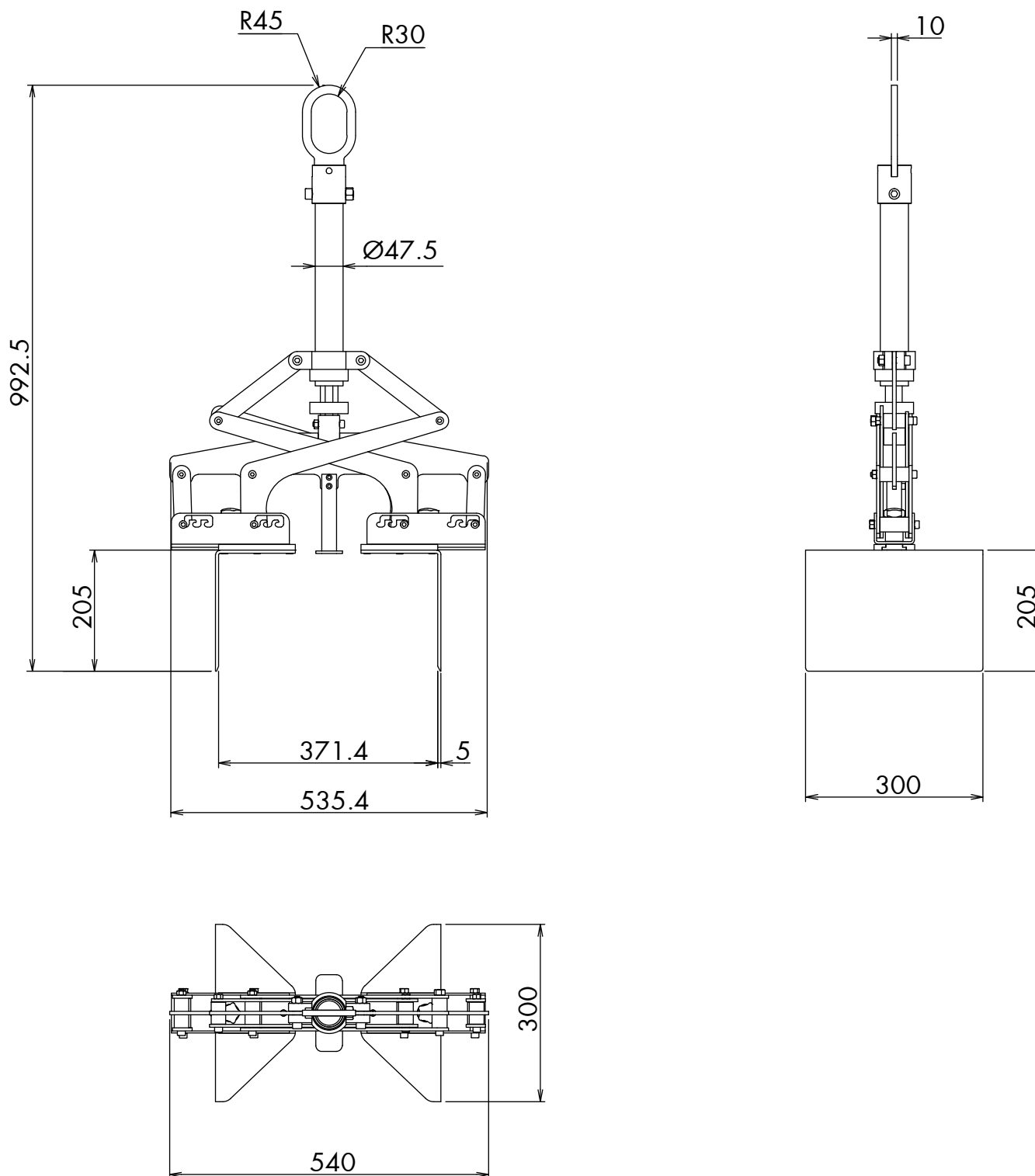
Featuring a gravity-controlled locking latch, this lifter automatically grips and releases loads, enhancing safety and convenience during material handling tasks.

When paired with Aardwolf Light Load Cranes (sold separately), the CBL-680 provides a robust and adaptable lifting system. Its adjustable and replaceable pads ensure versatility for a wide range of box sizes and material types.

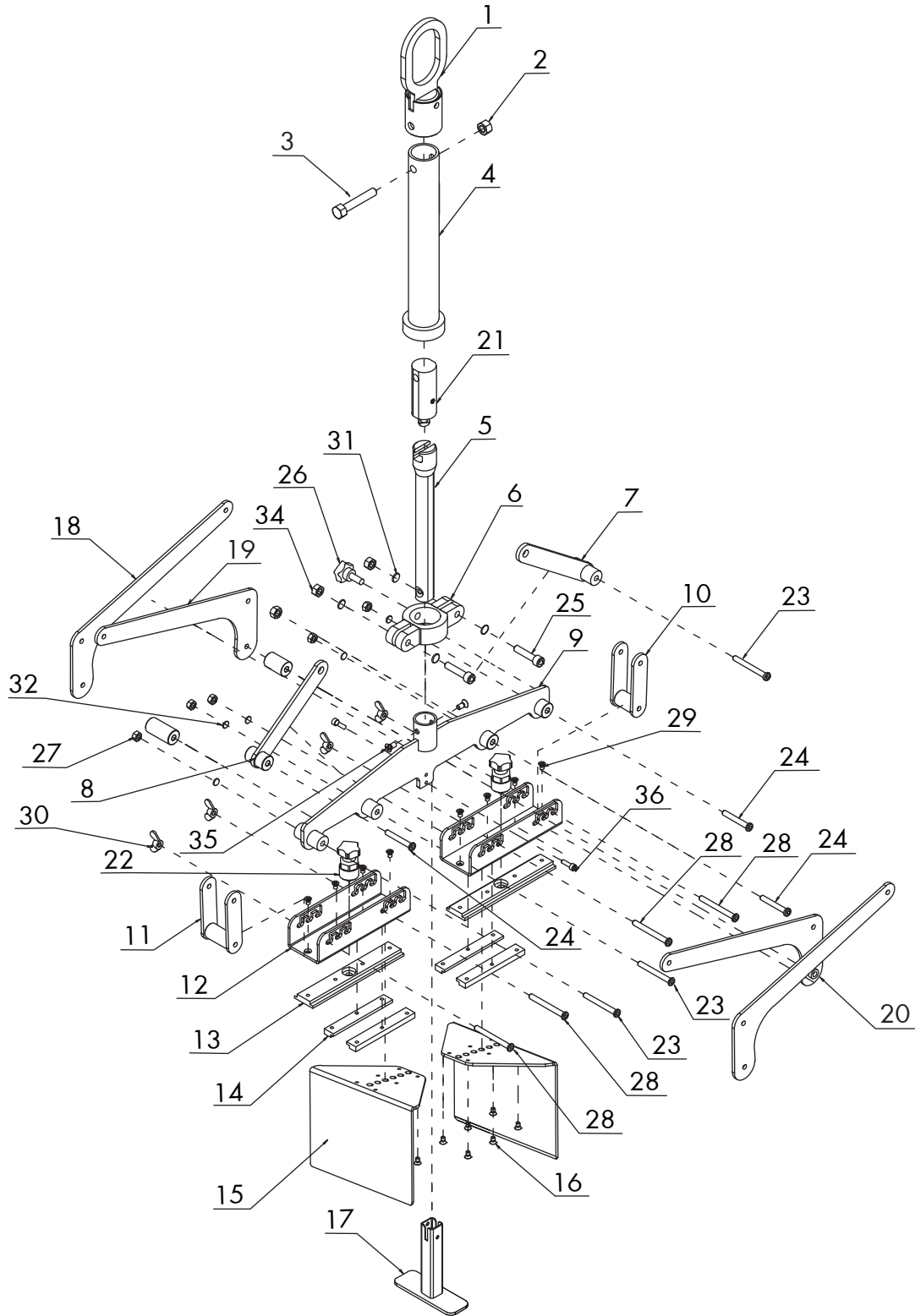
Key features

- ✦ **Reversible, Replaceable Sliding Pads**
Flip-ready, adjustable, and easily replaceable to handle a wide range of materials and loads.
- ✦ **Gravity-Controlled Locking Latch**
Automatically grips and releases materials for smooth, hassle-free operation.
- ✦ **Equipment Compatibility**
Designed for use with Aardwolf Light Load Cranes (recommended).
- ✦ **Material Handling Versatility**
Accommodates carton boxes and box-shaped materials with rough or smooth surfaces
- ✦ **Precision and Adaptability**
Engineered for efficiency and accuracy in specialized handling tasks.



**TECHNICAL DATA****DIMENSIONS**

ASSEMBLY DIAGRAM



PARTS LIST

POS.	DESCRIPTION	Q'TY
1	Crane Hook	1
2	Nut M12	1

POS.	DESCRIPTION	Q'TY
3	Hex Head Cap Screw Bolt M12x70 mm	1
4	Cylinder Tube	1

PARTS LIST (CONTS.)

POS.	DESCRIPTION	Q'TY	POS.	DESCRIPTION	Q'TY
5	Piston Tube	1	21	Locking	1
6	Sliding Joint	1	22	Latch Locking	2
7	Arm 1	1	23	Flat Head Hex Bolt M8x70 mm	3
8	Arm 2	1	24	Flat Head Hex Bolt M8x60 mm	3
9	Main Base	1	25	Bolt M12x40 mm	2
10	Arm 3	1	26	Handknob M10x30	1
11	Arm 4	1	27	Nylon Nut M8	6
12	Base Silde	2	28	Flat Head Hex Bolt M8x75 mm	3
13	Slider 1	2	29	Bolt M6x10 mm	8
14	Slider 2	4	30	Wing Nut M8	4
15	Carton Clamp Arm	2	31	Washer Ø12	4
16	Bolt M6x16 mm	8	32	Washer Ø8	6
17	Support Part	1	33	Bolt M6x20 mm	2
18	Arm 5	2	34	Nylon Nut M12	2
19	Arm 6	1	35	Bolt M8x10 mm	2
20	Arm 7	1	36	Bolt M6x16 mm	2

SPECIFICATIONS

CBL-680	METRIC	IMPERIAL
Grip range	65 mm - 680 mm	2½" - 26¾"
Working load limit	100 kg	220 lbs
Net weight	25 kg	55 lbs
Gross weight	30 kgs	66 lbs
Packaging dimensions	620 x 165 x 840 mm	24¾" x 6½" x 33⅛"

02 SAFETY INSTRUCTIONS

The CBL-680 has been rigorously tested to meet international safety standards; however, safe operation relies on strict adherence to the following instructions.

✦ Read Before Use

The operator must be expert or trained and possess the necessary knowledge, skills, and expertise in all relevant industry and regulatory standards for operating the Lifter in their geographical location.

✦ Training

The operator must be expert or trained and possess the necessary knowledge, skills, and expertise in all relevant industry and regulatory standards for operating the Lifter in their geographical location.

✦ Load Limits

Never exceed the 100 kg (220 lbs) working load limit. Ensure each load is centered and stable. Perform a test lift before every lift to verify safe operation.

✦ Pre-Use Checks

Inspect welds, bolts, and pads for cracks, wear, or looseness. A single compromised component can jeopardize the system.

✦ Environmental Hazards

Avoid use in high winds or on wet surfaces unless pads are verified for grip.

✦ Pinch Points

The latch and arms move under load—keep hands clear during operation.

✦ Crane Integration

Confirm the crane's capacity exceeds the combined weight of the lifter (25 kg/ 55 lbs) and load. The Aardwolf Light Load Cranes are recommended.

✦ PPE

Wear steel-toe boots, gloves, and a hard hat. The CBL-680's steel construction poses a crush risk if mishandled.

03 USER INSTRUCTIONS

1 Preparation:

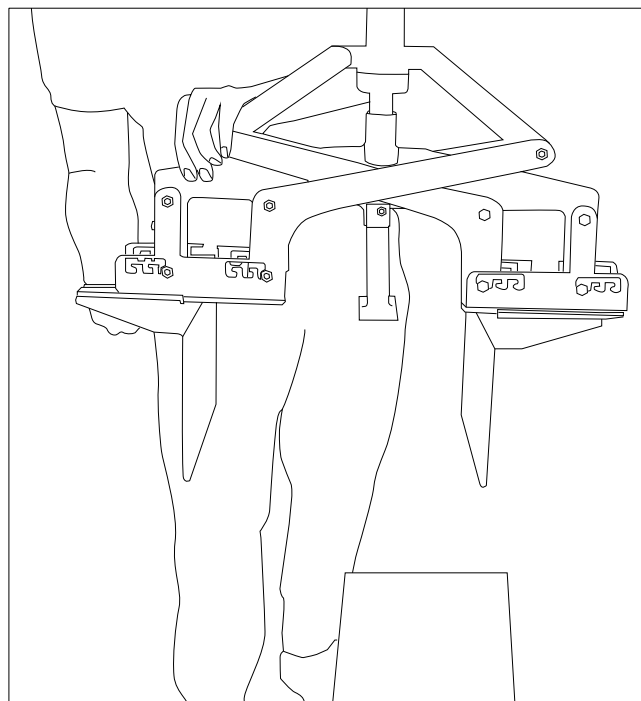
- Attach the CBL-680 to a compatible crane (The Aardwolf Light Load Cranes are recommended)
- Adjust the lifter pads to match the dimensions of the box to be lifted in the grip range 65 – 680 mm (2¹/₂" - 26³/₄"). Tighten the adjustment knobs securely.

2 Lifting:

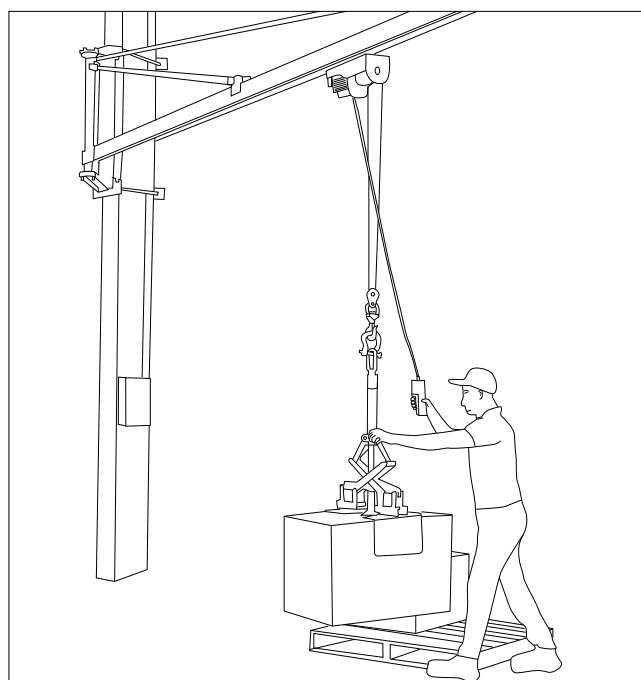
- Center the lifter over the load, ensuring pads contact the box sides evenly.
- Lower the crane until the latch engages.
- Raise the crane slowly.
- Transport the load, maintaining a vertical lift to avoid sway.

3 Releasing:

- Lower the load onto a flat surface, ensuring full contact.
- The gravity mechanism will release automatically.
- Raise the lifter clear.



Adjust the lifter pads



Lifting the load

04 MAINTENANCE



Proper Positioning

- ↗ Daily Inspection: Visually inspect the Lifter for wear, damage, or loose parts.
- ↗ Functional Test: Regularly test the auto-lock and unlock mechanisms.
- ↗ Load Test: Periodically perform a load test to ensure proper operation.

Cleaning

- ↗ Wipe the lifter with a damp cloth after use to remove dust or debris.

Storage

- ↗ Store the CBL-680 in a dry, covered area when not in use to prevent rust or corrosion.

Protective Covers

- ↗ Covers the Lifter to protect from dust and debris when unused.

Lubrication

- ↗ To ensure smooth operation, apply a light machine oil to the locking latch pivot points

Component Replacement

- ↗ Replace any worn or damaged parts as needed.

05 WARRANTY



PRODUCT CHECK AND REPORTING

Upon receiving the Lifter, the buyer should verify, based on the spare parts list and attached spare drawings, that all spare parts are intact and not lost during shipment. Any damages or losses must be officially reported to Aardwolf Industries within eight days of purchase.



WARRANTY INFORMATION

The Lifter comes with a 12-month warranty from the date of purchase, following Aardwolf Industries' warranty policy.



WARRANTY EXCLUSIONS

The warranty coverage does not apply if:

- ✘ The user fails to follow the instructions provided in the manual.
- ✘ Damage results from inadequate maintenance or inspections.
- ✘ The maximum working load limit of 100 kgs (220 lbs) is exceeded.
- ✘ Improper storage or usage causes damage.
- ✘ The user makes unauthorized repairs.
- ✘ Non-original or unauthorized spare parts are used.



DECLARATION OF CONFORMITY

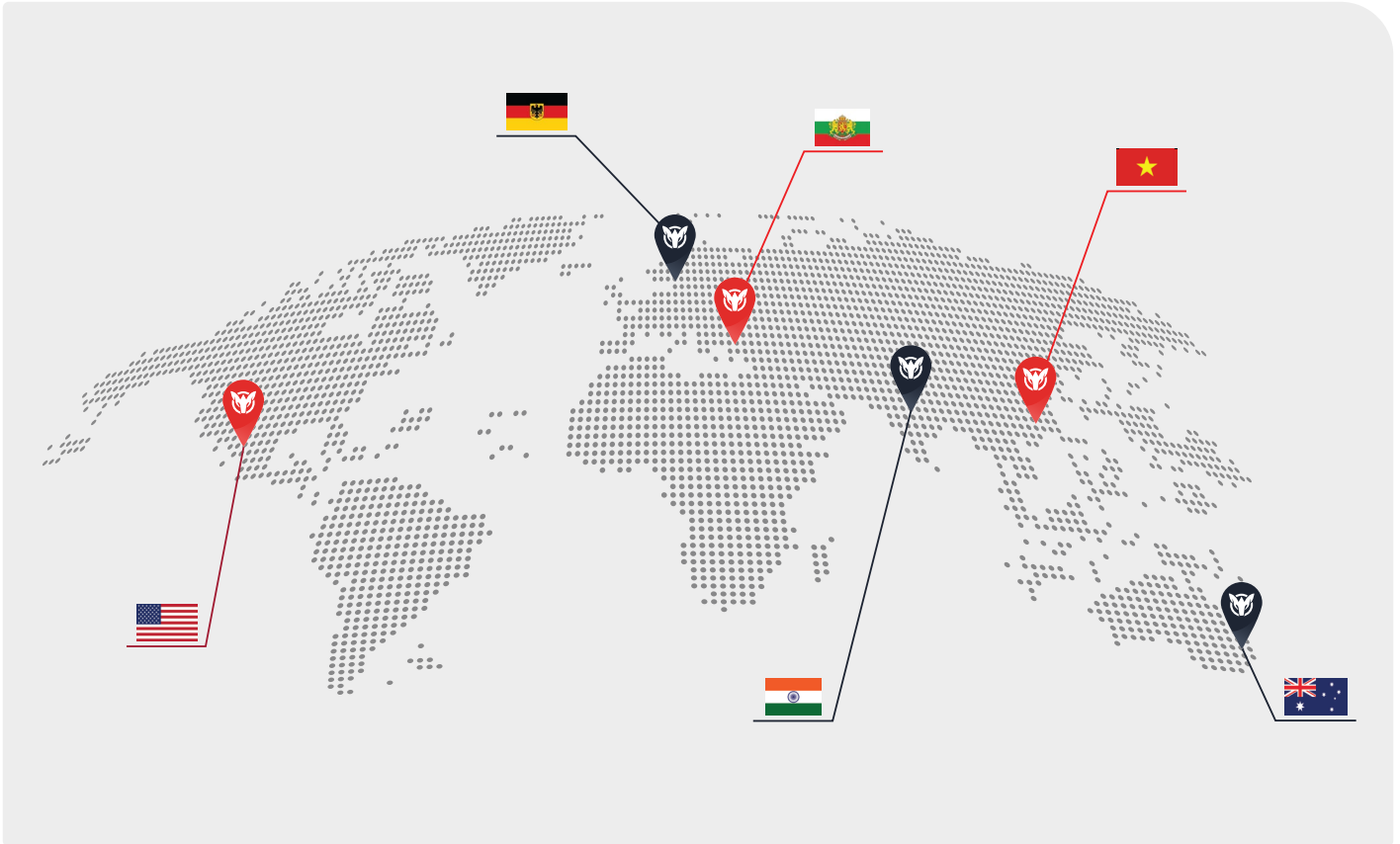
We declare that the Lifter conforms to the following standards:

- ✘ The Machinery Directive 2006/42/EC
- ✘ Australian Standard 4991-2004

Note: *It is the user's responsibility to comply with state or local laws. The end user is responsible for using the equipment safely, in the manner it is designed for, and within the unit's rated capacity.*

WE PROVIDE

Simple, Reliable, Cost Saving And
Awesome Ideas For Your Business



FIND THE NEAREST AARDWOLF SERVICE CENTER

AUSTRALIA

1/5 Stanton Road, Seven Hills NSW 2147
Tel: 02 9838 8427
Email: sales@toolrange.com.au
Web: www.aardwolfaustralia.com

BULGARIA

Str.Usta Kolio Ficheto 33
Tel: +359 887 933 754
Email: adrian@toolrange.com

GERMANY

Schulze-Delitzsch-Weg 2, 33175 Bad Lippspringe
Tel: 05252 8382830
Email: sales@toolrange.com.de

INDIA

Harmara Road, Industrial Area, Madanganj, Kishangarh,
District- Ajmer, Rajasthan India 305801
Tel: +91 73000 68444
Email: sales@aardwolf.co.in
Web: www.aardwolf.co.in

USA

9401 Norwalk Blvd, Santa Fe Springs, CA 90670
Tel: (562) 553-6050
Email: sales@aardwolfusa.com
Web: www.aardwolfusa.com

VIETNAM

1B, An Phu, Thuan An City, Binh Duong Province, Vietnam
Tel: +84 931 707 793
Email: info@aardwolf.com.au
Web: www.aardwolf.com.au

